



Focusing Screen Installation Guide

For the Canon 7D & 70D

***THIS GUIDE INTENDED FOR
PROFESSIONAL USE ONLY***

FOR PROFESSIONAL USE ONLY

Installation Guide: Canon 7D & 70D

Thank you very much for your purchase of a KatzEye™ focusing screen. This document provides installation instructions for the Canon 7D & 70D cameras.

PLEASE NOTE, THIS INSTALLATION GUIDE AND ACCOMPANYING PHOTOS ARE BASED ON THE SERVICE OF A 7D CAMERA. THE 70D CAMERA IS THE SAME IN PRINCIPLE, BUT THE HANDLING TAB IS ON THE OPPOSITE SIDE. IT IS IMPORTANT TO REMEMBER WHEN LOOKING AT THE PHOTOS THAT THE GEOMETRY OF THE 70D MODEL IS OPPOSITE THAT SHOWN IN THIS GUIDE!

The installation of the KatzEye™ screen requires no modifications to the camera, and when properly performed, is completely reversible. This is a complex procedure, not intended to be performed by the end user. This guide is for professional use only!

WARNING: THESE INSTRUCTION ARE PROVIDED "AS IS" WITHOUT WARRANTY OF ANY KIND, EITHER EXPRESSED OR IMPLIED, INCLUDING, BUT NOT LIMITED TO THE IMPLIED WARRANTIES OF MERCHANTABILITY AND FITNESS FOR A PARTICULAR PURPOSE. KATZEYE™ OPTICS ACCEPTS NO LIABILITY FOR DAMAGE RESULTING FROM USING THESE INSTRUCTIONS. SHOULD DAMAGE OCCUR AS A RESULT OF FOLLOWING THESE INSTRUCTIONS, THE USER WILL ASSUME THE ENTIRE COST OF ALL NECESSARY SERVICING, REPAIR OR CORRECTION. KATZEYE™ OPTICS' LIABILITY IS LIMITED TO REPAIR OR REPLACEMENT OF PARTS SUPPLIED BY KATZEYE™ OPTICS, AT OUR SOLE DISCRETION.

Note: Pictures are available in larger format on the internet. Just click the links.

1. Set up a work area which is relatively free of dust and has a soft surface on which to place the camera.
2. Collect the necessary tools and supplies. You will need:
 - a. Narrow tip tweezers
 - b. Wide tip tweezers
 - c. #0 Cross point (phillips) screwdriver
 - d. PecPads or similar
 - e. Small scissors
 - f. Bulb blower
 - g. Rubber gloves, powder free



Click Photo to Enlarge

3. Before removing the lens or body cap, use a bulb blower or cleaning brush to remove dust around the lens mount. This will help prevent dust from getting into the viewfinder.

FOR PROFESSIONAL USE ONLY

4. Remove the lens from the camera and clean any dust from the mirror chamber before beginning the procedure to help ensure a dust-free result. Place a strip of PecPad over the main mirror for protection. The pad is omitted in the photos in this guide for visual clarity. Remove the two screws retaining the cover plate and remove the cover plate.



[Click Photo to Enlarge](#)



[Click Photo to Enlarge](#)

5. The focusing screen is retained by a spring wire with two bends used for handling. Grasp the spring wire at the bend using a narrow tip tweezers and gently lift the wire from under the latch. Remember to click the photos for a larger version online if necessary.



[Click Photo to Enlarge](#)



[Click Photo to Enlarge](#)

6. Pivot open the spring wire to the mirror and allow the focusing screen to gently fall against the wire. Note the gold colored shim which has stuck to the focusing screen, as shown in the picture at right.



[Click Photo to Enlarge](#)



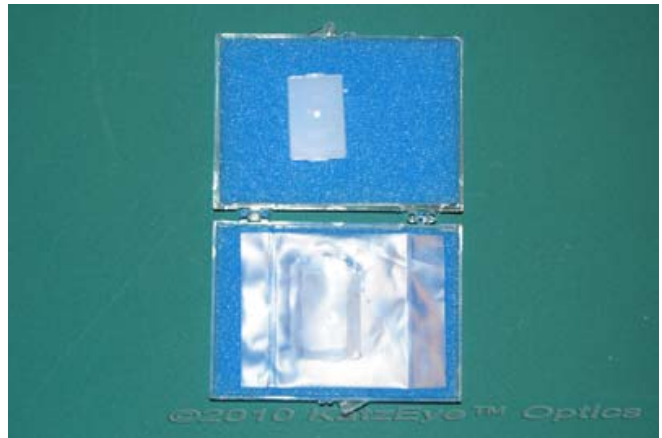
[Click Photo to Enlarge](#)

FOR PROFESSIONAL USE ONLY

7. Tip the shim back into the recess if it has come forward, and using broad tipped tweezers, carefully grasp only the focusing screen, by the handling tab only, and remove it from the camera. Place the screen on the open padded lid of the KatzEye™ case. **Be careful not to scratch the screen on the retainer or other hard surface! Only touch the screen by the tab!**

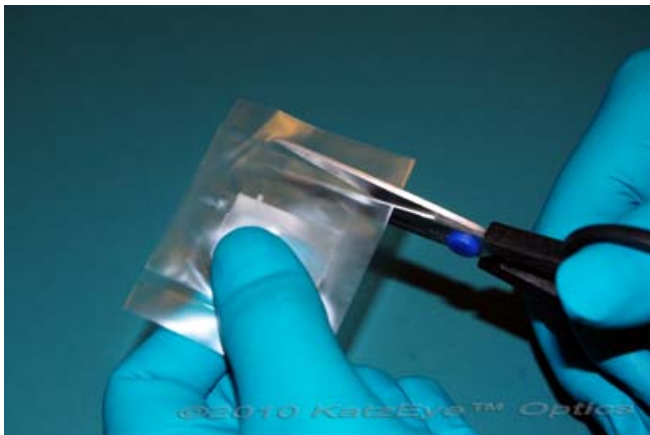


Click Photo to Enlarge

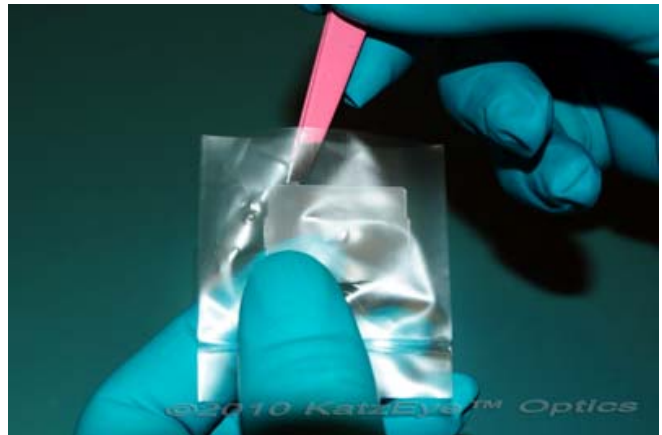


Click Photo to Enlarge

8. Carefully cut the seal off the bag containing the KatzEye™ screen with a scissors. Keep the special non-scratching bag to use for storing the original screen. Lift the screen from the bag using a broad tipped tweezers. **Only touch the screen by the tab!**



Click Photo to Enlarge



Click Photo to Enlarge

9. Insert the screen into the camera and place it in the recess, making sure the shim is in place first and that the screen sits flat. **Be careful not to scratch the screen on the retainer or other hard surface! Only handle the screen by the tab!**



Click Photo to Enlarge

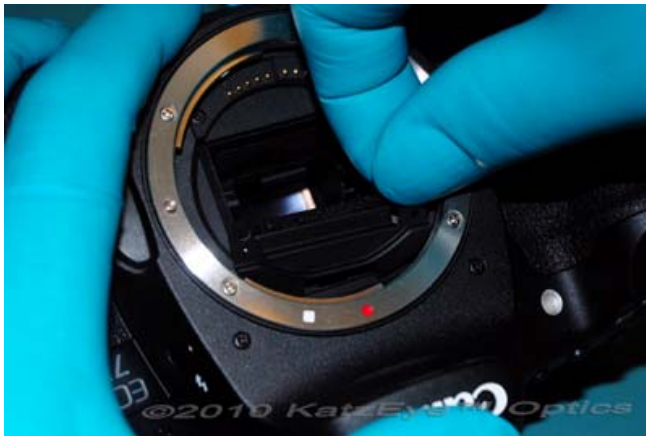
FOR PROFESSIONAL USE ONLY

10. Using gloved fingertips, carefully press the wire bends to latch the wire under the catch. **Be very careful not to touch the screen or mirror!**



Click Photo to Enlarge

11. Insert the cover plate back into the camera and secure with the two screws.



Click Photo to Enlarge



Click Photo to Enlarge

12. If necessary, blow any dust out of the mirror chamber with the bulb blower. Attach a lens and test the camera functions. If the camera functions correctly, the installation is complete. If any problems are encountered, please contact KatzEye™ Optics technical support for assistance.

Installation Complete

Technical Support

Technical support is available by email to customerservice@katzeyeoptics.com. We strive to return all emails within 24 hours. Technical support is also available by phone at +1.413.743.2523 between the hours of 8:00am and 6:00pm Eastern Standard Time (GMT-5:00), Monday through Saturday. If we are not available, please leave a brief message, including your name and phone number, and we will call you back as soon as possible and always within 24 hours.

If you do not wish to complete the installation yourself, KatzEye™ Optics can provide installation services. Please visit the KatzEye™ Optics website, www.katzeyeoptics.com to purchase our installation service. We would also be happy to advise your choice of local camera shop regarding the installation procedure. Thank you very much for your purchase of a KatzEye™ focusing screen and may the world favor you with abundant photo opportunities.

Take care,



Rachael Katz – Co-Owner, KatzEye™ Optics

Addendum A: Screen Alignment & Focus Calibration

Screen Alignment

Because of the high precision manufacturing of the KatzEye™ focusing screen, the AF lights and spot meter arcs should align well to the prisms and markings of the KatzEye™ focusing screen with no special procedures. However, because of parallax, the position of your eye in the viewfinder can shift the apparent alignment significantly. So before concluding there is an alignment problem, move the camera back and forth slightly in front of your eye to be certain your eye is properly centered in the viewfinder.

The alignment should be very close without any special procedure, as long as the screen is installed correctly. If the alignment appears very far off, it is recommended to check for correct installation before proceeding. It also bears repeating that the apparent alignment can shift substantially based on the position of your eye in the viewfinder, so you might want to move your eye around a bit to be sure that there is actually a discrepancy. Also, bear in mind that the alignment of the markings will not affect the focusing accuracy in any way. The design of the 7D and 70D cameras do allow the screen to be shifted significantly in its frame. It can only move a very small amount; but if you see a misalignment that is troubling, it may be possible to move the screen slightly to achieve perfect alignment. It is not necessary, nor desirable, to remove the focusing screen to perform the alignment. Simply unlatch the retainer, give the camera a gentle nudge, and re-latch the retainer.

Please note that because of the optics of the pentaprism, left/right motion of the screen is reversed; in other words, if the prism appears too far to the right, it will actually need to move to the right to correct the alignment. And if it appears too far to the left, it will need to move to the left. Vertical alignment is not readily adjustable. The alignment of the AF lights to the prism will not affect the accuracy of the focusing functions in any way; so once the alignment is close enough to be visually acceptable, the process is complete. Aligning viewfinder markings should not be required in a proper installation and is not considered a normal part of the installation procedure.

Calibration

The KatzEye™ focusing screen will maintain the exact calibration set by the factory, provided it is correctly installed, and no special calibration procedures are required. If it is believed that there is a calibration problem, users are strongly advised to first check for correct installation of the focusing screen. If correct installation has been confirmed and there still appears to be a calibration problem, please contact KatzEye™ Optics technical support for assistance.